



4,950 MTPD METHANOL PLANT OF YUHUANG CHEMICAL INC.

ST. JAMES PARISH, LOUISIANA

Introduction of Parent Company Shandong Yuhuang Chemical Co., Ltd (SYCC).

Overview

- Fixed assets of 18.82 billion RMB (\$3 billion)
- More than 5,600 employees
- 13 subsidiaries
- Turnover 28.75 billion RMB (\$3.63 billion)
- Ranked as 438th of the top 500 Chinese companies and 24th of China's top 25 chemical companies.
- *All based on data of 2014



Products

gasoline, diesel, MTBE, DME, isobutylene, styrene, polystyrene, polypropylene, propylene, propane, isobutene and butadiene, polybutadiene rubber, rare earth butadiene rubber, fine C5, isoprene alkenyl, piperylene, dicyclopentadiene, bicyclo resins, piperylene resins, petroleum resins, benzene, ethyl benzene, toluene, xylene, polyisobutylene, ethylene oxide, naphtha, petroleum coke, sulfur, civil LPG, etc.

产品目录

汽油 gasoline
柴油 diesel oil
甲基叔丁基醚 MTBE
二甲醚 dimethyl ether
异丁烯 isobutene
苯乙烯 styrene
聚苯乙烯 EPS
聚丙烯 polypropylene
丙烯 propylene
丙烷 propane
异丁烷 isobutane
丁二烯 butadiene
顺丁橡胶 butadiene rubber
稀士顺丁橡胶 NDBR
精细碳五 fine C5
异戊二烯 isoprene
间戊二烯 piperylene
双环戊二烯 dicyclopentadiene
双环树脂 Bicyclic resin
间戊树脂 poly-pentadiene resin
石油树脂 hydrocarbon resin
苯 benzene
乙苯 ethylbenzene.
甲苯 methylbenzene
二甲苯 dimethylbenzene
聚异丁烯 Polyisobutylene
环氧乙烷 epoxyethane
石脑油 naphtha
石油焦 petrol coke
硫磺 sulphur
民用液化气 Civil liquefied gas



Introduction of Yuhuang Chemical Inc. (YCI)



Overview

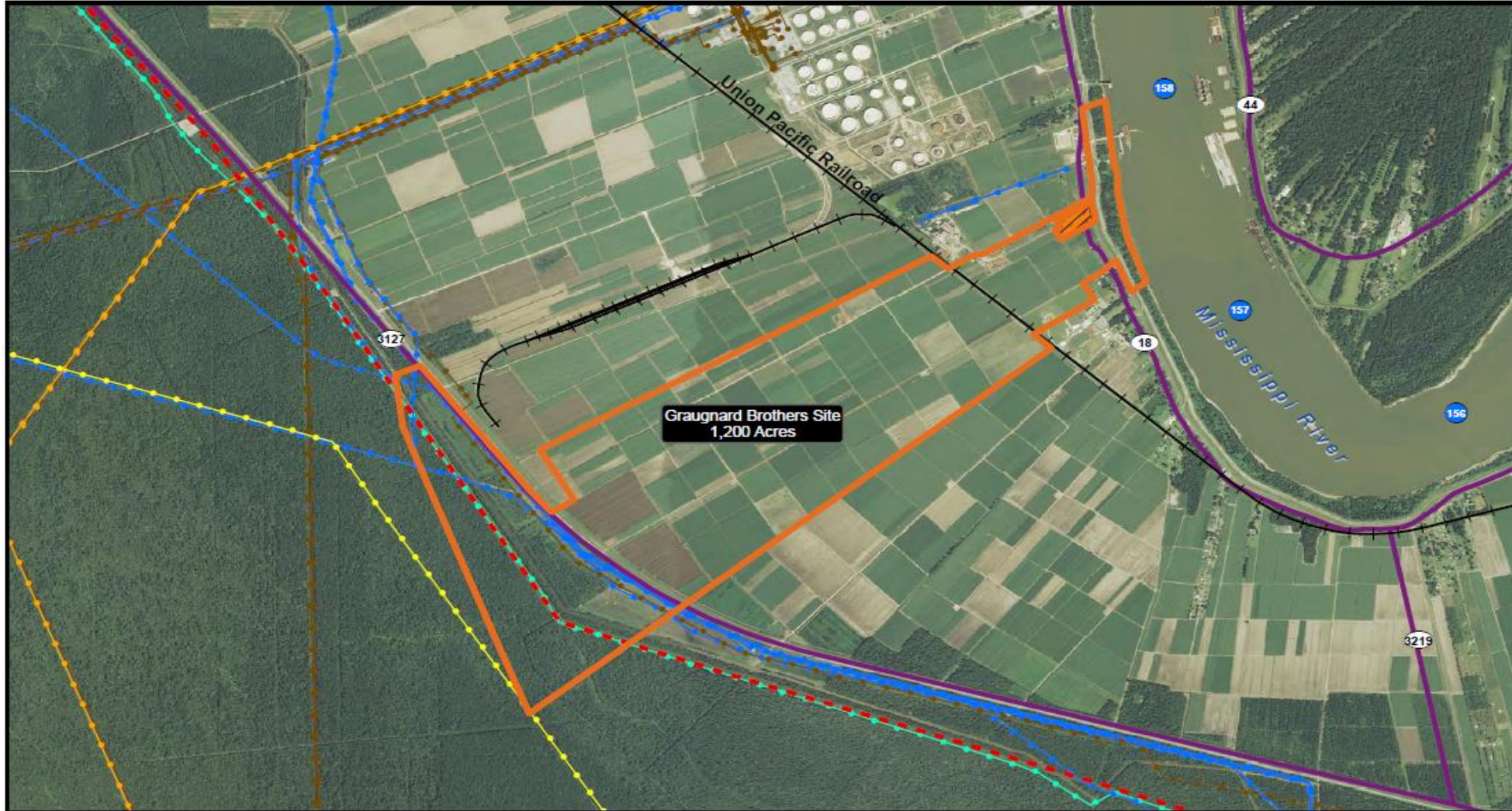
- A subsidiary of Shandong Yuhuang Chemical Co. Ltd, established in Jan 2013
- 45 employees: 23 directly hired, 6 from HQC and 16 of Worley Parsons
- Located at 10777 Westheimer Rd, Houston TX
- Office in Baton Rouge

4,950 MTPD Methanol Project

- ▶ A natural-gas based 4950 MTPD Methanol Plant in St. James Parish, Louisiana, USA.
- ▶ Lurgi Mega-Methanol[®] technology, 2-stage reforming and 3-column distillation process
- ▶ Project Management Team (IPMT) by YCI and Worley Parsons
- ▶ Early construction will begin in 2015 and Mechanical Completion targeted at the 4th quarter of 2017
- ▶ Total investment capital: over \$1 billion

Graugnard Brothers Site - 1,200 Acres - St James Parish

Selected Infrastructure Map

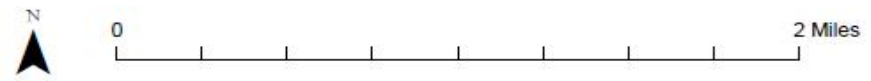


St James Parish



- Potential Site
- Currently Unavailable
- Railroad
- Transmission Power Lines
- River Mile Marker
- Highways**
 - Interstate
 - US Highway
 - LA State Highway
- St James Pipelines**
 - ALL OTHER PIPELINES
 - ANHYDROUS AMMONIA
 - PROPANE
 - CRUDE OIL
 - NATURAL GAS
 - NATURAL GAS LIQUID

Source:
 -Aerial Photo: 2013 NAIP
 -Base Map: ESRI, US Census, LDOT, LED
 -Pipelines: NPMS 2013
 -Transmission Power Lines: HTSI 2012
 -Locations and Boundries are approximated
 GIS Analyst: MDT 02/13/2014



Mapping conducted by:
 Louisiana Economic Development
 Business Intelligence
 1051 N Third St
 Baton Rouge, Louisiana 70802
 (225) 342-3725
 OpportunityLouisiana.com