



Mastering the Tides of Change

IFFCBANO International Trade Symposium

Why We Choose the Port of South Louisiana

Mark VandeVoorde, CEO

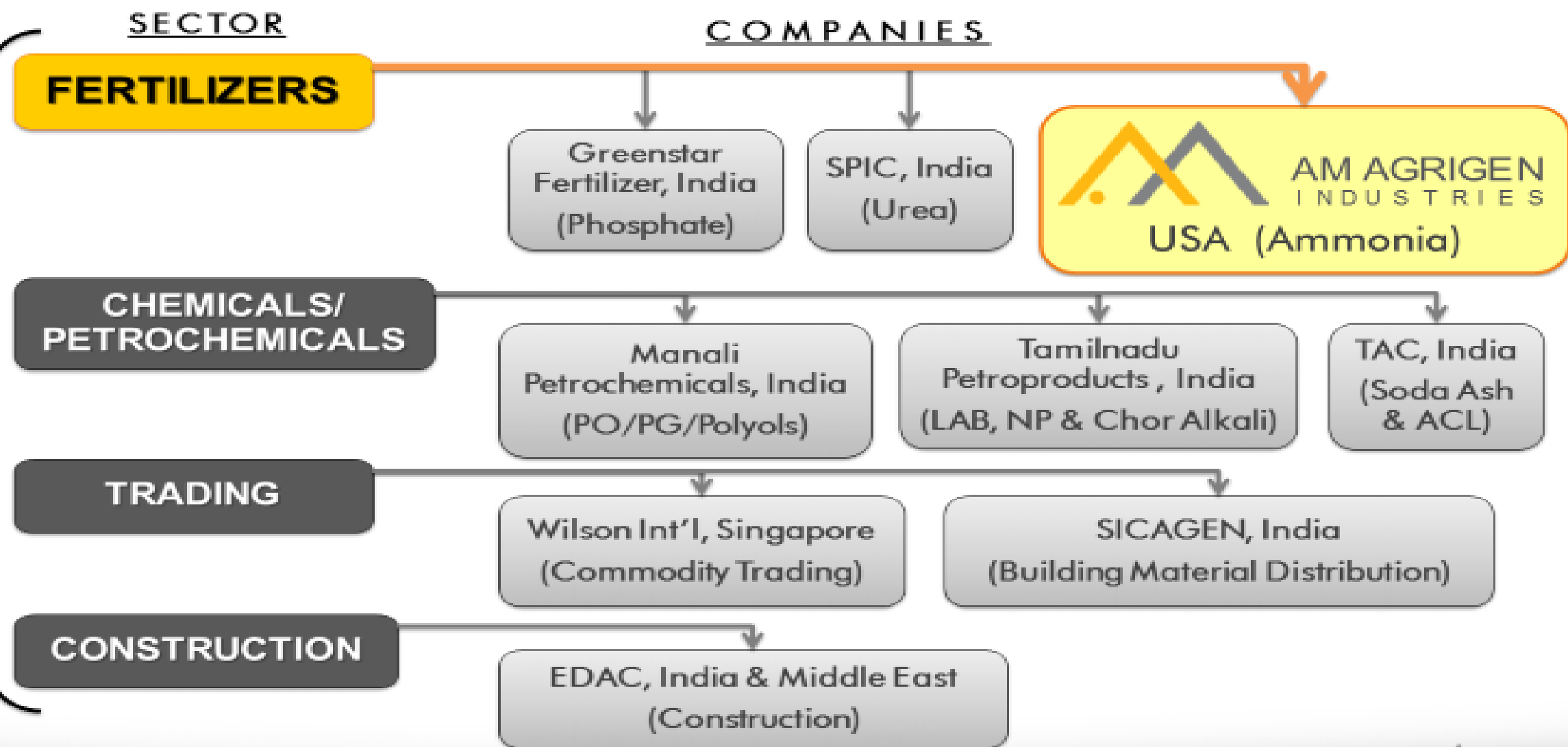
THE PROJECT

- Ammonia and Urea manufacturing plant
- 2300 MT/Day of Ammonia, 4000 MT/Day of Urea
- Located at mile 131 on the West Bank of the Mississippi River, near Killona, LA, in St. Charles Parish
- Total cost \$1.1 billion

US Subsidiary of AMIH



AM INTERNATIONAL HOLDINGS



- CONFIDENTIAL -

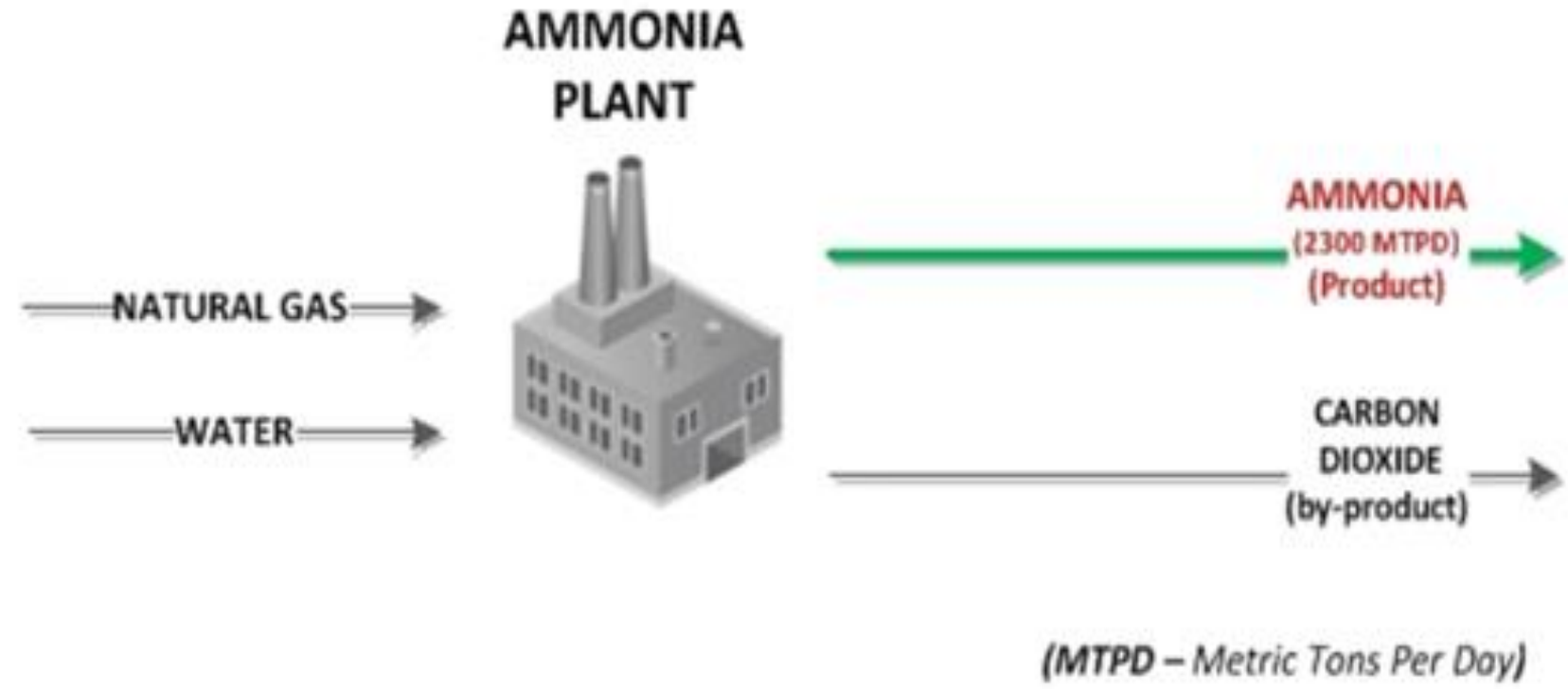
History in Fertilizer Business

AMIH – FERTILIZER EXPERTISE

- Over 40 years experience in fertilizer business
 - Fertilizer project development
 - Operations & maintenance of ammonia-urea plant
 - Marketing
- Pan India coverage
- Capacity
 - 600,000 MTPA urea
 - 700,000 MTPA phosphatic fertilizers
- A premium brand among Indian farmers



THE PROCESS



PROCESS TECHNOLOGY >> KBR, USA

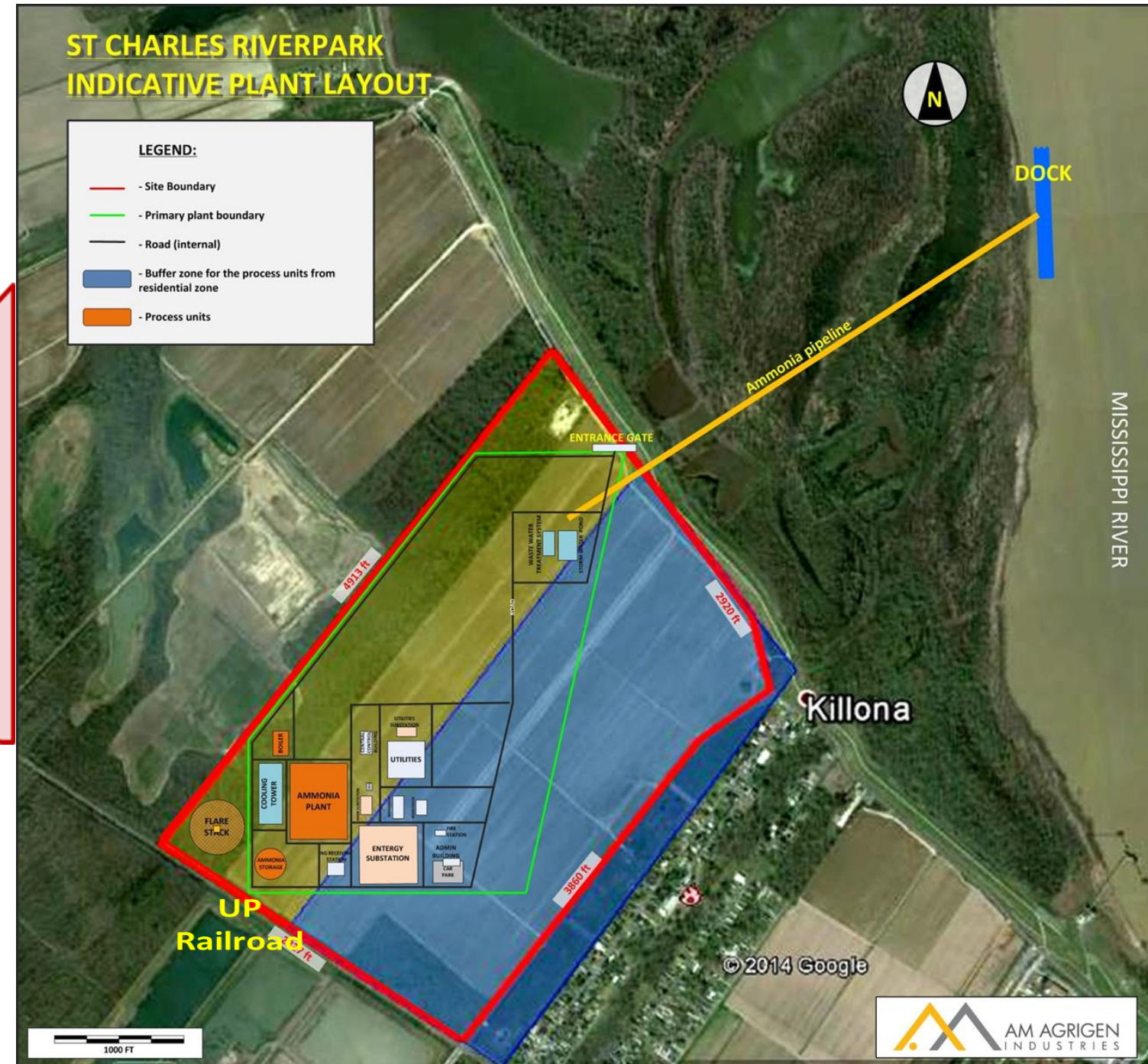
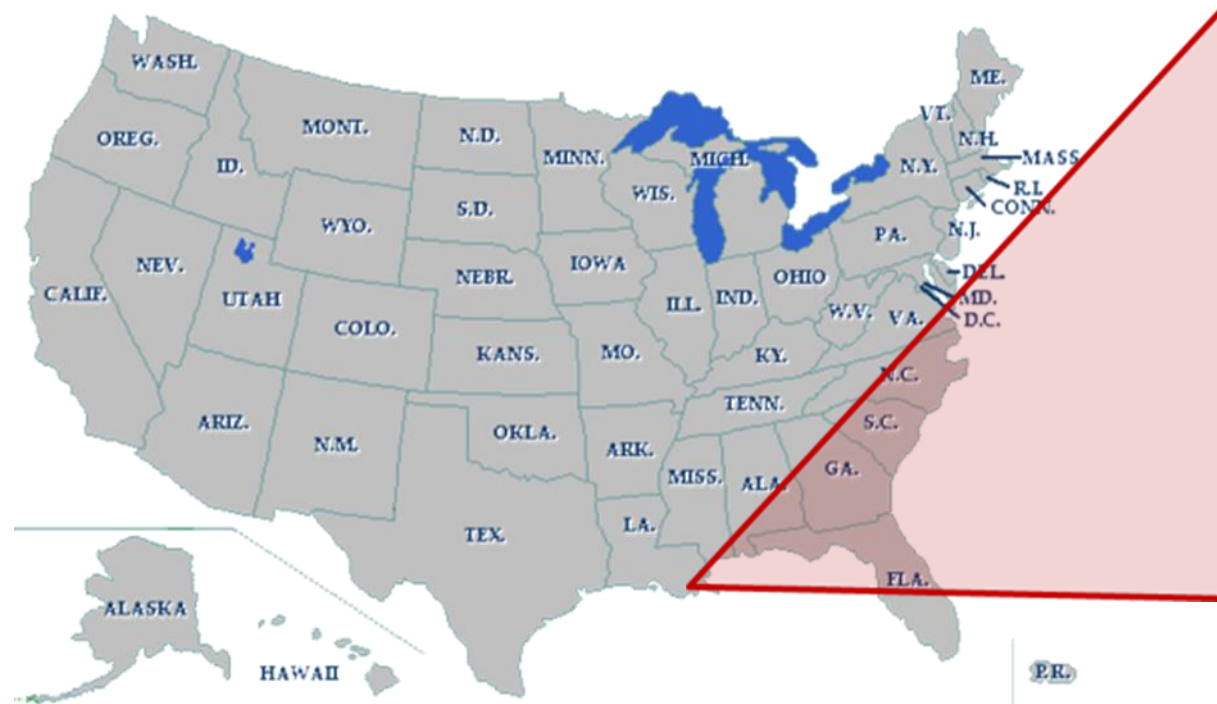
- KBR Ammonia Technology plants > 200
- High reliability ammonia plant
- Flexibility of feed gas composition

Facility designed with a Captive Power Plant (CPP) ,making use of process generated steam, and will export surplus power.

- CONFIDENTIAL -

Site Location

St. Charles Parish, LA



Geographic Location Advantage

- 300 acre site next to the Mississippi River
- 50+ feet of vessel draft
- Dock designed for 180,000 dwt vessels
- Accessible to natural gas delivery infrastructure
- > 3 miles from NuStar ammonia pipeline
- UPRR lines located along SW property line

Location Decision Table



CRITERIA	LOCATION				
	St Charles Riverpark, LA	Savannah, LA	Willow Bend, LA	Port of Victoria, TX	Cedar Crossing, TX
Ability to build a deepwater dock	Yes	Unlikely	Unlikely	No	No
Urea logistics capability					
Ship (capesize)	Yes	Unlikely	Unlikely	No	No
Barge	Yes	Unlikely	Unlikely	Yes	Yes
Rail	Yes	Yes	Yes	No	Limited
Road	Yes	Yes	Yes	Yes	Yes
Ammonia logistics capability					
Ship	Yes	Unlikely	Unlikely	No	No
Barge	Yes	Unlikely	Unlikely	Yes	Yes
Rail	Yes	Yes	Yes	No	Limited
Road	Yes	Yes	Yes	Yes	Yes
Availability of natural gas (raw material)	Yes	Yes	Yes	Yes	Yes
Access to utilities	Yes	Yes	Yes	No	Yes
Level site gradient	Yes	Yes	Yes	No	Yes
Wetland impact	Low	Low	High	Low	Low

Location Decision Criteria

CRITICAL

- Deep Draft for Vessels
- Natural Gas Pipeline access
- Heavy Industrial Zoning
- Rail and Road Access
- Ability to Obtain Permits
- Support for Local and State Government
- Labor for construction and operations

HIGHLY BENEFICIAL

- NuStar Ammonia Pipeline Access
- Hydrogen Pipeline Access
- Room to expand in the future

Full Location Criteria List

- Ability to build a world scale dock
- Access to Raw Materials
- Access to Utilities
- Ability to obtain Permits
- Ability to Distribute Product to Customers
- Labor Availability
- Minimize Environmental Impact
- Land Availability
- Land elevation to minimize flooding risk
- Minimize archaeological impact
- Minimize wetland impact
- Minimize impact on endangered species
- Zoned for Heavy Industrial use
- Air Quality Attainment area
- Access to water for cooling tower operations

MANAGING PROJECT VALUE CHAIN

OUTBOUND LOGISTICS

PRIMARY CHANNEL

DEEP-WATER DOCK ON THE MISSISSIPPI

- Ability to load barges and ocean going ships (Capesize)
- Can leverage on Mississippi to reach out the product to the corn and soybean growing regions
- Strategically located to enable export of product



CROSS COUNTRY AMMONIA PIPELINE

- Ability to pump product ammonia directly into NuStar's cross country pipeline.
- Pipeline connecting major consumption and trans-shipment points
- Ongoing discussions with NuStar

NuStar Ammonia pipeline network



- CONFIDENTIAL -

17

MANAGING PROJECT VALUE CHAIN

OUTBOUND LOGISTICS

SECONDARY CHANNEL

ROAD ACCESS AT THE SITE

- Louisiana Highway along site: **18** & **3127**
- Interstate highway close to site: **10** & **310**
- US highway close to site: **61** & **51**



RAIL ACCESS AT THE SITE

- Union Pacific (UP) rail line adjacent to the site
- Approval to construct rail spur into the site
- UP networks enables reach to major wheat growing regions in US
- Other rail networks to reach other regions in US



Extraordinary Local and State Support



- Port of South Louisiana
 - Provided vessels for River tours to visiting delegations
 - Offered to work with us on tax free bond issue
 - Consistent support at meetings with owners, investors, and customers
 - Support given at Air Permit Hearing

Support

- Louisiana Economic Development
- St. Charles Parish Economic Development
- St. Charles Parish President and Parish Council
- GNO Inc.

KEY PROJECT PARTNERS

Ammonia Technology:

KBR

Environmental Permitting:

URS

Law Firm (Project
Development):

JONES
WALKER

Early Works Contractor:

TOYO
ENGINEERING

Dock Engineers:

WILLBROS

Company Structuring:

pwc

Project Technical Review:

WorleyParsons

Auditors:

Deloitte.

THANK YOU!

